

UMBRA SSC CANOPY

Exterior Sun Control 10 71 13



Umbra SSC freestanding passive sun control canopies are an excellent solution for providing shade where you need it. Custom designed perforated panels allow for unique shading and branding opportunities. Pre-engineered for most conditions, Umbra SSC products provide economical design options for any outdoor shelter application. All Umbra SSC canopies contribute to earning LEED credits.

SSC canopies are modular and built with all aluminum construction using welded and mechanical connections. All Umbra canopies arrive pre-assembled and ready for installation with a super-durable architectural coating.

Umbra SSC is designed, engineered and manufactured by Structureworks.

Canopy Configuration:

Extruded aluminum components with welded and mechanical connections, perforated aluminum shade panels and ASTM A307 Steel tie-backs.

Canopy Sizes:

17'6" x 8'6" and 15'6" x 8'6"

Canopy Fascia:

6" High

Column Attachment:

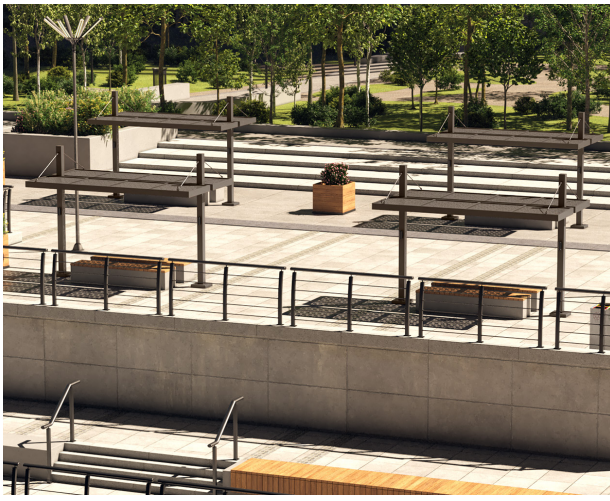
Concrete embedment or through bolt.

Integrations:

Aura low-voltage lighting can be integrated into canopy components. Wiring and mounting provisions can be included for accessories such as fans, heaters, and A/V equipment. Custom signage for branding and wayfinding can be integrated.

STRUCTUREWORKS[®]

877.489.8064 • www.structureworks.com



Submittals

Structureworks will submit shop drawings illustrating plans, elevations, sections and details showing spacing of components and connections. We can provide 2D and 3D CAD files for project-specific drawings, as well as samples of material finish and color options. As required, Structureworks can perform structural engineering services and submit an engineered plan set prepared by a licensed professional engineer.

Finish

Structureworks uses a multi-step powder coat process to provide an AAMA 2604 compliant low-maintenance finish on aluminum canopies that provides excellent outdoor durability, gloss retention and fade resistance in a variety of colors, sheens, and textures. Simulated woodgrain powder coat can be provided on some components for a low-maintenance wood look.

Engineering

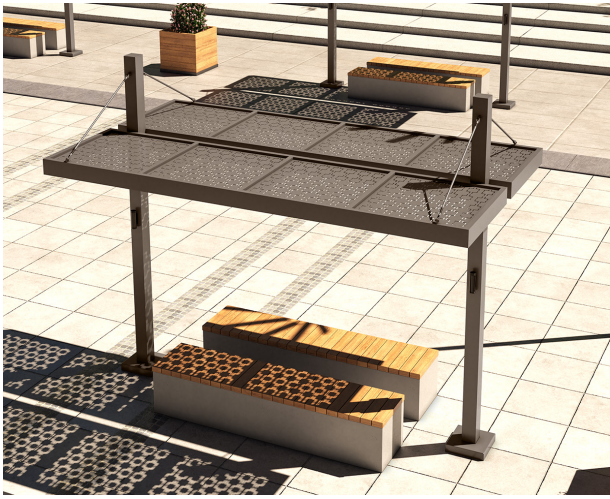
Engineering is a critical step in many projects. Structureworks will engineer a canopy as part of the design process. Our engineering department handles the loads and calculations, foundation and connections design, and issues stamped plan sets for permitting. Licensed in 50 states and DC, Structureworks can engineer an architectural canopy to meet your project requirements.

Maintenance

Aluminum canopies are designed to provide a long service life with very little maintenance. Our super-durable architectural coating will provide an attractive, high-quality finish for many years. Inspect mechanical fasteners yearly and adjust as needed.

Warranty

30-Year Limited Warranty for canopies. 10-Year Limited Warranty on powder coat finish.



Notes: